



**SLAYDEN**  
**60 x 32 x 77 ½**  
**Low Threshold Shower**

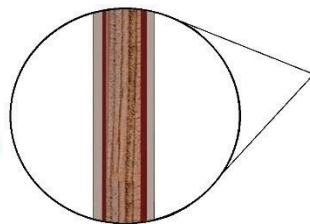
**Available in white**  
**Quick Ship in**  
**7 days**

**Features**

- Easy entry, low, 4" threshold
- Large integral comfort height seat (19" x 19")
- Sturdy shower base with textured floor
- Accessory shelves and foot ledge
- Simple, easy, 3 piece installation from front or rear
- Accommodates a shower door
- Full ArmorCore reinforced walls for extra strength that enables bars to be located to fit your individual needs
- Premium, durable applied acrylic/fiberglass construction
- High Gloss smooth finish with Arched Back Wall
- Attractive and easy to clean
- Limited Lifetime warranty
- Meets or exceeds UPC, IPC, ANSI Z124.1, NAHB, HUD, FHA
- Made in the USA

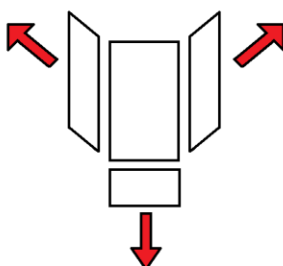


**ArmorCore  
Reinforced Walls**



**Low Step,  
Easy Entry**

**Ships Assembled**  
**Easy to Dis-assemble**



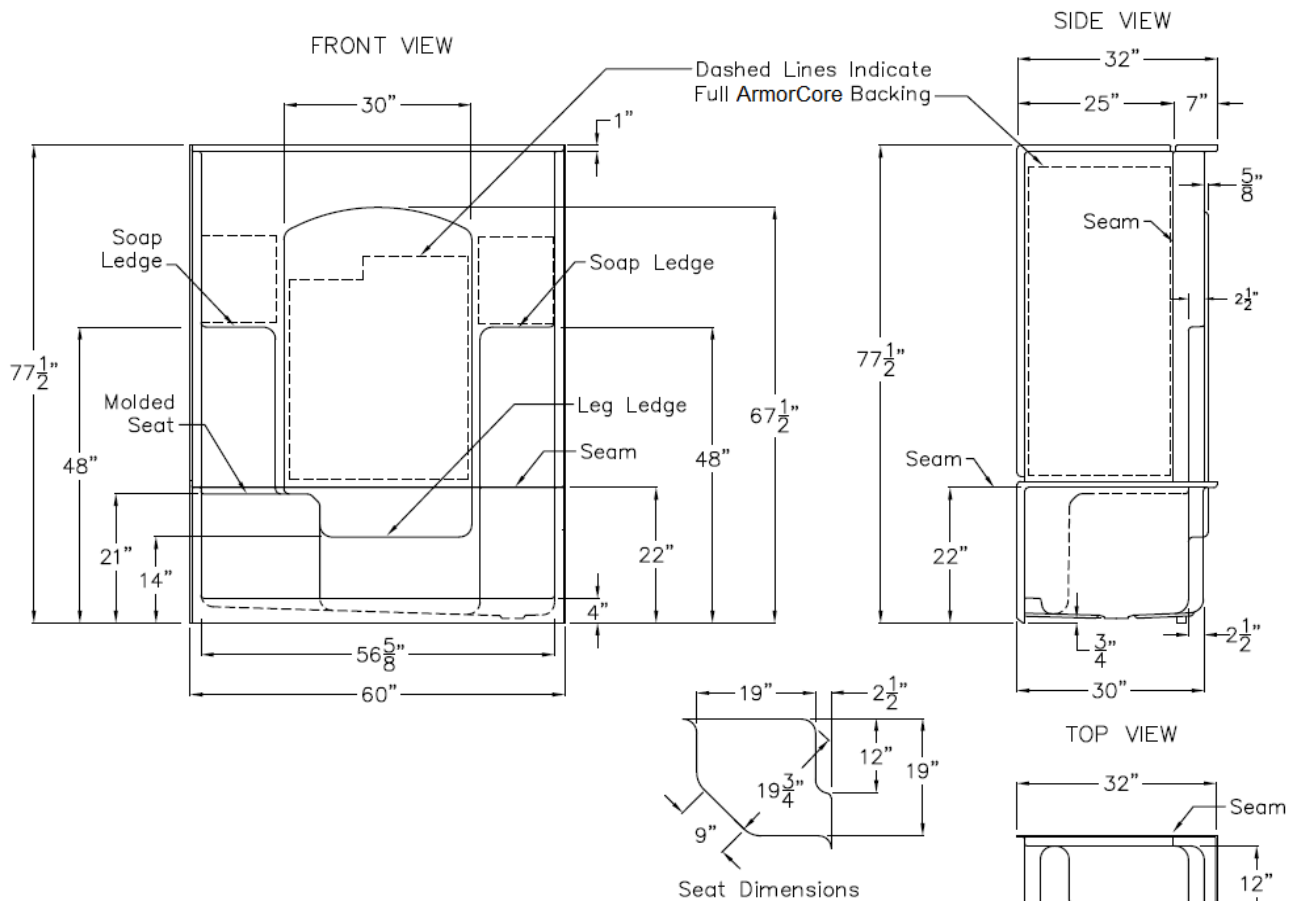
**Seat & Drain**

**Model #**

**Item #**

RH Seat w/ LH Drain	LM3260SH1S4PBR	639309
LH Seat w/ RH Drain	LM3260SH1S4PBL	639291

SUBMITTAL DATA



Accessible Shower Stall

THE SHOWER ENCLOSURE SHALL BE LAUREL MOUNTAIN MODEL LM 3260 SH 1S 4 PIECE 60" ACRYLIC SECTIONAL SHOWER.

UNIT HAS LARGE MOLDED SEAT, LEG LEDGE, CORNER SOAP DISHS, AND 4.0" THRESHOLD. FOUR PIECE UNIT WITH BASE AND TWO PIECE WALL WITH MIDDLE VERTICAL SEAM.

CONFIGURED WITH FULL ARMORCORE BACKING ON WALLS,

HANDED BY THE SEAT.  
 LEFT HAND SEAT HAS RIGHT HAND DRAIN  
 RIGHT HAND SEAT HAS LEFT HAND DRAIN

BASE SEAM IS 22" ABOVE THE BOTTOM OF THE SKIRT.

Unit complies with IAPMOZ124-2011, Home Innovation Research Lab, UPC, HUD, FHA, and CSA B45.5.

DUE TO THE NATURE OF THE MATERIALS DIMENSIONS MAY VARY ± 1/2"

LAUREL MOUNTAIN

Drawing#: LM 3260 SH 1S 4P 4.0

Date: 4-27-07.

Revised: 1-5-18

LAUREL MOUNTAIN

26 Nesbitt Road, Suite 257, New Castle Pa. 16105  
 1 (800) 930 0050 - FAX 1-(800) 930 0051